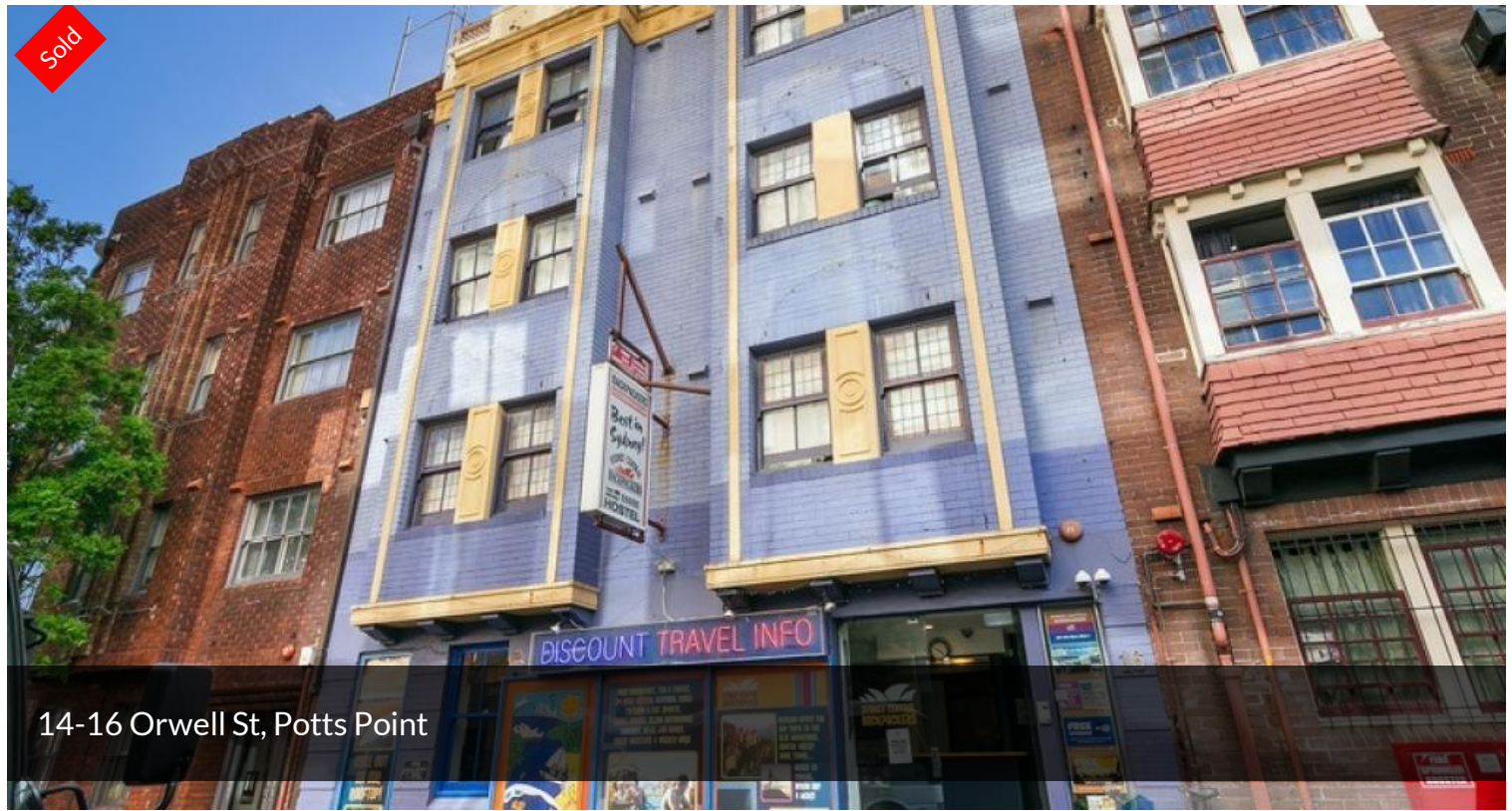


Sold



14-16 Orwell St, Potts Point



Sydney Eastern Suburbs Backpacker Freehold

- Freehold going concern known as "Sydney Central Backpackers".
- Established 36 room backpacker hostel spanning 4 levels.
- Walking distance to Kings Cross Station & conveniences of the Eastern Suburb's.
- Various mix of dormitories + private rooms.
- Retail entry + common facilities, rooftop terrace with city skyline views.
- Annual gross income 2017 - \$865,000 + GST (approx).

Auction

Tue 5th June @ 10:30am (unless sold prior)

Venue 50 Margaret Street, Sydney

The above information provided has been furnished to us by the vendor/s. We have not verified whether or not that information is accurate and do not have any belief in one way or the other in its accuracy. We do not accept any responsibility to any person for its accuracy and do no more than pass it on. All interested parties should make and rely upon their own inquiries in order to determine whether or not this information is in fact accurate.

Price	SOLD
Property Type	Commercial
Property ID	1305

Agent Details

Allan Levy - 0400 999 888

Jerry Leis - 0413 514 761

Office Details

Double Bay

Suite 4 Lvl 1, 1 Transvaal Avenue

Double Bay NSW 2028 Australia

02 9362 8888

